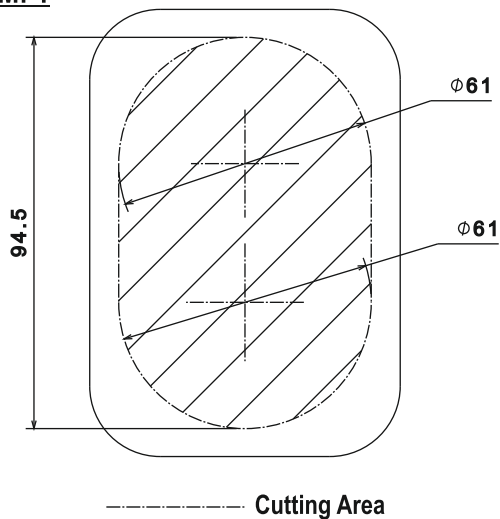


**DIAGRAM: 1**



### INSTALLATION GUIDELINES

**Diagram: 1**

- 1.1) Stick the drilling template in the desired mounting position.
- 1.2) Drill the cutout area.

**IMPORTANT:** Ensure you have access to the area below the hole for tightening the screws of the joystick's mounting system.

**Diagram: 2**

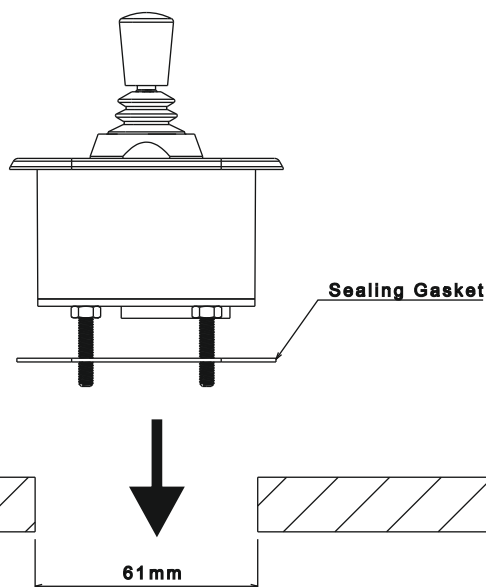
- 2.1) Move the joystick towards the hole to fit it in place. Make sure that the sealing gasket is positioned between the joystick and the mounting plane.

**Diagram: 3**

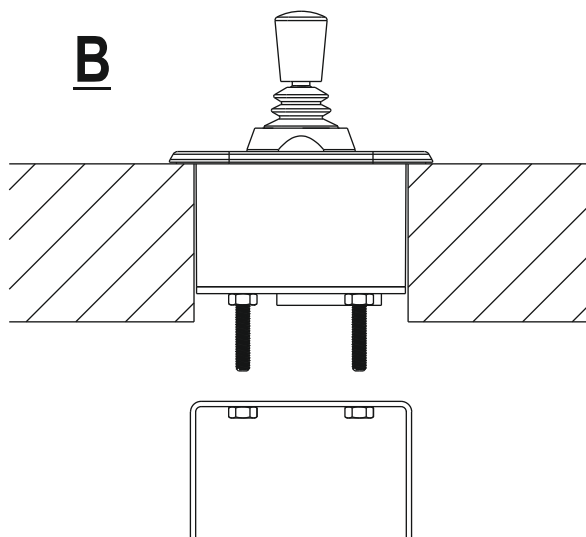
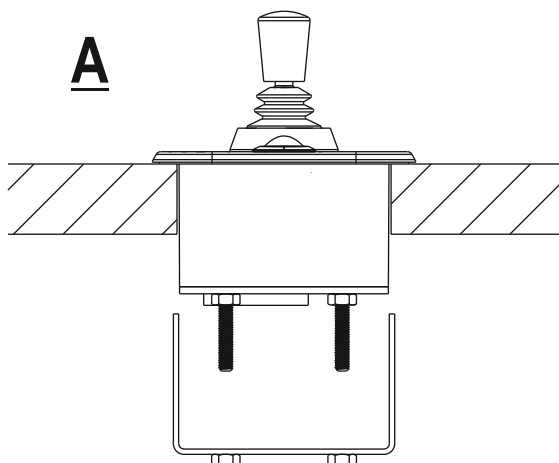
- 3.1) Move the mounting bracket towards the bolts and tighten the nuts (Diagram 3A).

**IMPORTANT:** If the mounting plane is too thick, put the mounting bracket upside down (Diagram 3B). If needed, modify the bracket to suit the installation requirements.

**DIAGRAM: 2**



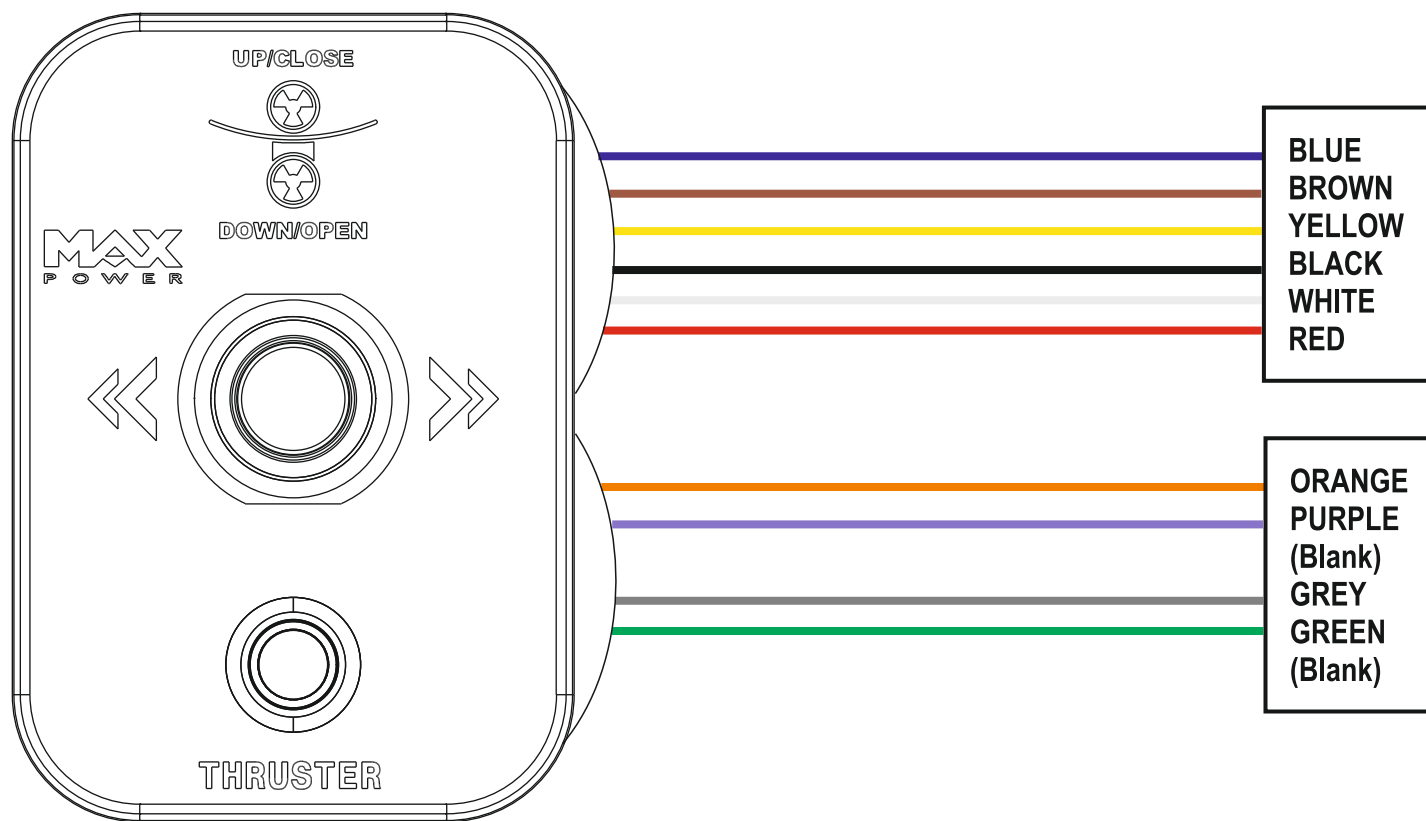
**DIAGRAM: 3**



## INSTALLATION GUIDELINES

MAX POWER Joystick 4 Directions, for Retractable Thrusters, Black  
Code: 75893

MAX POWER Joystick 4 Directions, for Hyd. Retractable Thrusters R300, R450 & R600, Black  
Code: 70880



### 6 ways male WAGO

Cable	Operation
Blue	Right Position
Brown	Left Position
Yellow	Buzzer (-)
Black	Switch's LED - Button
White	Switch ON-OFF
Red	Power supply positive + Buzzer (+)

Cable	Operation
Orange	Green Button UP (ON-OFF)
Purple	Green Button (UP) LED
(Blank)	
Grey	Red Button DOWN (ON-OFF)
Green	Red Button (DOWN) LED
(Blank)	